

# Arborg Bifrost-Riverton Recreation Master Plan Stakeholder Meetings

October 13<sup>th</sup> and 15<sup>th</sup>, 2020  
November 2<sup>nd</sup> and 3<sup>rd</sup>, 2020

# Agenda

- **Introductions**
- **Recreation Master Plan Purpose**
- **Background Study Findings**
- **Facility and Program Inventories**
- **Trends in Rural Recreation**
- **Public Engagement Approach**
- **Recreation Master Plan Outline**
- **Next Steps**
- **Discussion**



# Introductions



*Landmark Planning & Design* is a local, employee-owned land use planning firm that has undertaken projects throughout Manitoba for rural and urban municipalities, planning districts, and private developers.

Our main areas of practice include:

- Land Use Planning
- Stakeholder Engagement
- Development Approvals
- Planning Studies

We've been retained by the *Town of Arborg* and *Municipality of Bifrost-Riverton* to lead a comprehensive **Recreation Master Planning** process.

# Recreation Master Plan Purpose

- Leisure and recreation activities are an essential component of any community and are fundamental to quality of life.
- Such activities play an important role in strengthening a sense of community, promoting active and healthy lifestyles, attracting and integrating new residents, and in the overall quality of life for residents.
- Arborg and Bifrost-Riverton are blessed with a wide range of quality recreational facilities and programming.
- **The purpose of the Recreation Master Plan is to provide Arborg and Bifrost-Riverton with comprehensive strategies for meeting the current and future recreation needs of the community.**
- Over the next decade, the Plan will help prioritize capital expenditures, outline an implementation framework, define future direction in terms of community recreation service delivery, and perhaps most importantly, assist the municipal Councils in decision-making as it relates to recreation facilities, spaces, and programming.



# Recreation Master Plan Tasks

Task 1: Project initiation with the Steering Committee

Task 2: Background research, trends and analysis

Task 3: Inventory – Facilities and Programs

**Task 4: Stakeholder and Community Engagement**

Task 5: Recreation Needs Assessment and Prioritization

Task 6: Recreation Facility Condition Assessment

Task 7: Recreation Delivery System and Volunteer Retention Assessment

Task 8: Recommendations, implementation, and funding

Task 9: Draft Recreation Master Plan

Task 10: Final Recreation Master Plan



# Preliminary Background Study Findings



# Background Study

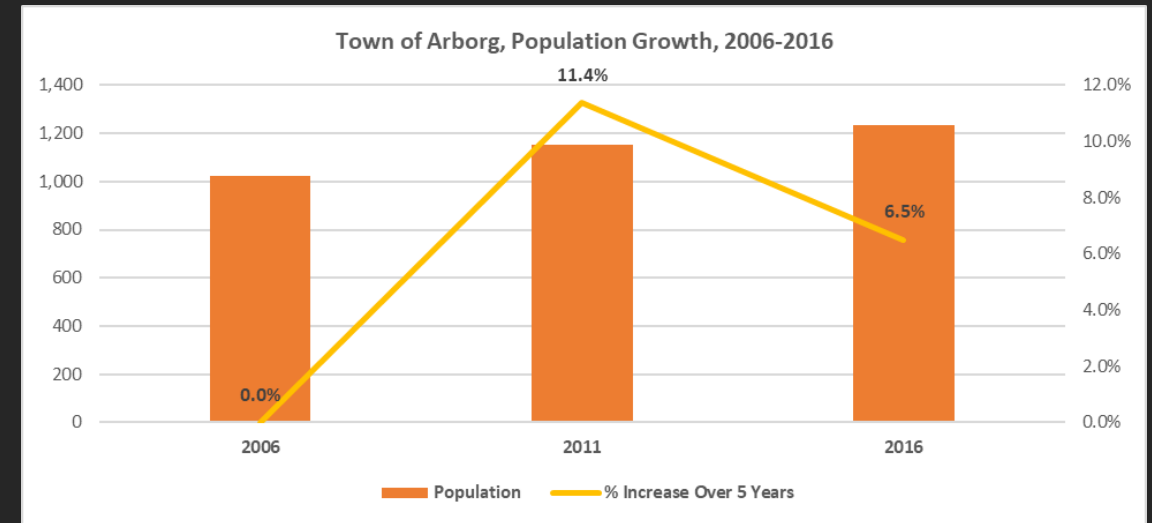
In order to set the context for the recreation study, the project team is currently finalizing a background study, which looks at:

- Local Demographics, Socio-economics, and population trends
- Recent Trends in Rural Recreation
- Existing Policy Context
  - Development Plan
  - Zoning By-law and other Municipal By-laws
  - Provincial Legislation and Policy
- Previous Studies / Existing Documents
  - Age-Friendly Arborg and Riverton
  - Arborg Bifrost-Riverton Sustainable Community Action Plan
  - Recreation Commission policy manuals
  - Use of School Facilities Agreements



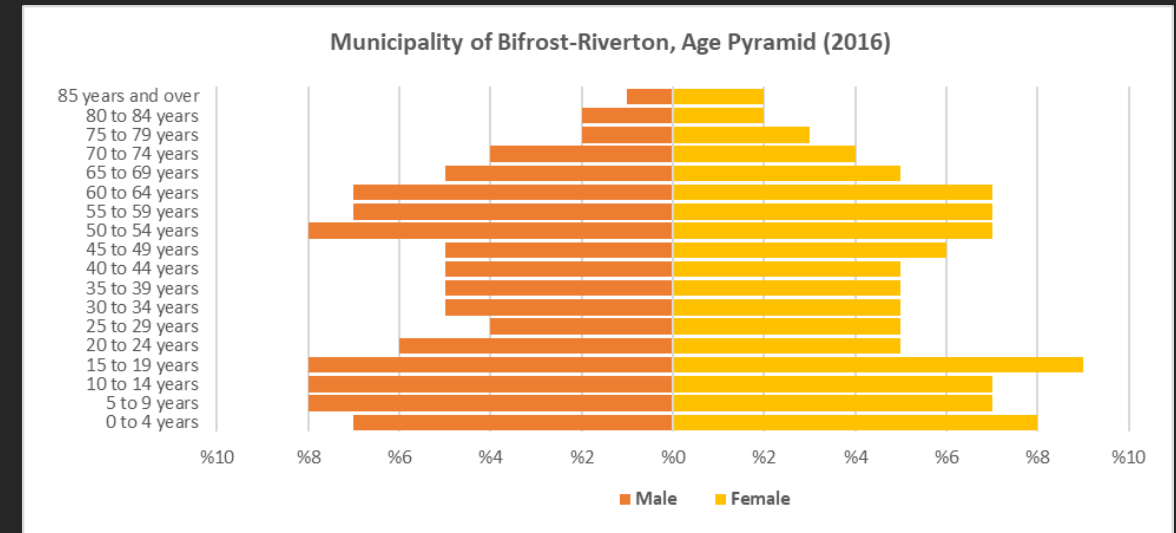
# Demographics – Arborg

- Arborg's population has grown slowly but steadily over the past two decades, from 959 residents in 2001 to 1,222 residents in 2016 (an annual compounded growth rate of 1.6%)
- Relatively balanced age profile, with all age cohorts well-represented
- An aging population, which is well-served by several services and accommodation options for seniors
- Median age of 41.0 in 2016



# Demographics – Bifrost-Riverton

- Bifrost-Riverton’s population has been slowly declining over the past two decades
- The amalgamated municipality’s population declined by 3.9% between 2011 and 2016
- The two largest population cohorts in the municipality are those under the age of 20, and those in the 50- to 65-year old range
- The rural areas of the municipality have a significant youth population, while the community of Riverton skews older
- The median age was 38.6 years in 2016, almost identical to that of the Manitoba (38.3)



# Existing Studies

- Age-Friendly Studies in both communities (as well as the Sustainable Community Action Plan) revealed several shared themes, including:
  - The need to connect seniors and youth
  - The need for better pedestrian connections and crosswalks
  - The need to increase volunteer recognition
  - The need to better advertise events and activities
  - The need for open space amenities, including sidewalks, benches, and lighting
  - The need for additional parks and/or greenspace

**Strengths and Opportunities: Housing**

**Strengths**

**Continuum of Care**  
Arborg offers a large range of assistive, supportive, and continuing care options. Older adults could benefit from home care services to bridge the gap between independent and assisted living.

**There should be a continuum of care in a community, providing independent, assisted, and long-term care spaces.**  
Public Health Agency of Canada, 2009




Figure 12: Services housing, Arborg, MB

There are 16 units of 55+ independent living at the House of Hope (Figure 12), 16 units each of supportive housing and assisted living at Mary-Thornton Estates, and 40 beds at the Arborg Personal Care Home (Interlake RHA, 2018), as well as additional units at Sunrise Lodge North and South (Figure 13). Although there is concern over a 30 person waiting list at Mary-Thornton Estates, Arborg is clearly including seniors in local housing plans.

**Quality of homes and lots**  
The homes in Arborg are generally very well maintained. Lot sizes in Arborg are typically quite generous, providing an opportunity for optional secondary suites (Figure 14).




Figure 13: Detached seniors housing, Arborg, MB




Figure 14: Single family homes, Arborg, MB

12 Age-Friendly Arborg

18

## 11 PARKS AND RECREATION

Arborg-Bifrost Riverton offers numerous recreation, leisure, and sport facilities and programming. Activities and events are tailored to meet a diverse range of interests and needs. Programming includes the Age-Friendly Club, baseball, church choir, 4H, figure skating, fitness club, high school sports, hockey, horse club, golf and gun club, soccer, summer day camp, swim program, Ukrainian dancing and more.

**WALKING TRAILS**  
Community walking paths are located in both Arborg and Riverton. The Icelandic River Trail in Arborg follows the north shore of the Icelandic River. At approximately 700m in length, the town has plans to extend the path. Two bridges, one on each side of the community, will be installed to allow pedestrians across the Icelandic River. In addition, a marked community walking path is located in Arborg and on the old rail bed in Riverton.

**PUBLIC BEACHES AND CAMPGROUNDS**  
There are three public beaches and two campgrounds in the region. Gull Harbour Campground and Sunset Beach is located 56 km north east of Riverton and features two beaches, 214 campsites (unserviced and serviced), tennis courts, an amphitheater, and covered wood lot. The nearby Gull Harbour Marina provides fuel and concessions. Located on the west shore of Lake Winnipeg, Inuvua Provincial Park has a small campground and beach. North of Riverton, the Riverton Sand Islands consist of three small islands extending between Riverton and Hecla Island. During low water years, the closest island is connected to the mainland by a sandbar. Visitors will see Ring-billed Gulls, Common Terns, and Piping Plovers.

**WINTER RECREATION**  
Winter recreation activities include skating, cross-country skiing, and ice fishing, and snowmobiling. A skating rink and skating path is cleared on the Icelandic river in Arborg and tobogganing is popular on the Icelandic River bank. The Arborg Nordic Ski Club has a membership of approximately 22 skiers. The club coordinates ski outings to local trails, and instruction in skiing techniques and waxing.

The Interlake Snow Trackers are the active snowmobile club for the region. The club is a not for profit recreational club and maintains approximately 600 km of snowmobile trails around Arborg, Hecla and Riverton. The club also owns and maintains seven warm up shelters in the region. Snow-passes are required to ride the Interlake Snow Trackers trails. The fees from the snow-passes help fund trail grooming and maintenance.

**ARBORG-BIFROST PARKS AND RECREATION COMMISSION**  
The Arborg-Bifrost Parks and Recreation Commission maintains facilities for recreational activities and assists in the coordination of events and programs in the community. Facilities include the Aquatic Centre, Arborg and District Arena, Community Centre, and the curling rink. The Aquatic Centre is an outdoor facility, open from the beginning of June to the September long weekend. The curling rink and arena is open from October to March and the community centre is open year round. The arena and community centre is available for weddings, socials, and conferences, serving as a community hub for

WSP  
No. 181 (2/28/19)-07  
September 2017

Arborg-Bifrost Riverton Sustainable Community Action Plan  
Arborg-Bifrost Riverton CDC

# Facilities Inventory

The inventory of recreation facilities and open spaces features information about each asset, including:

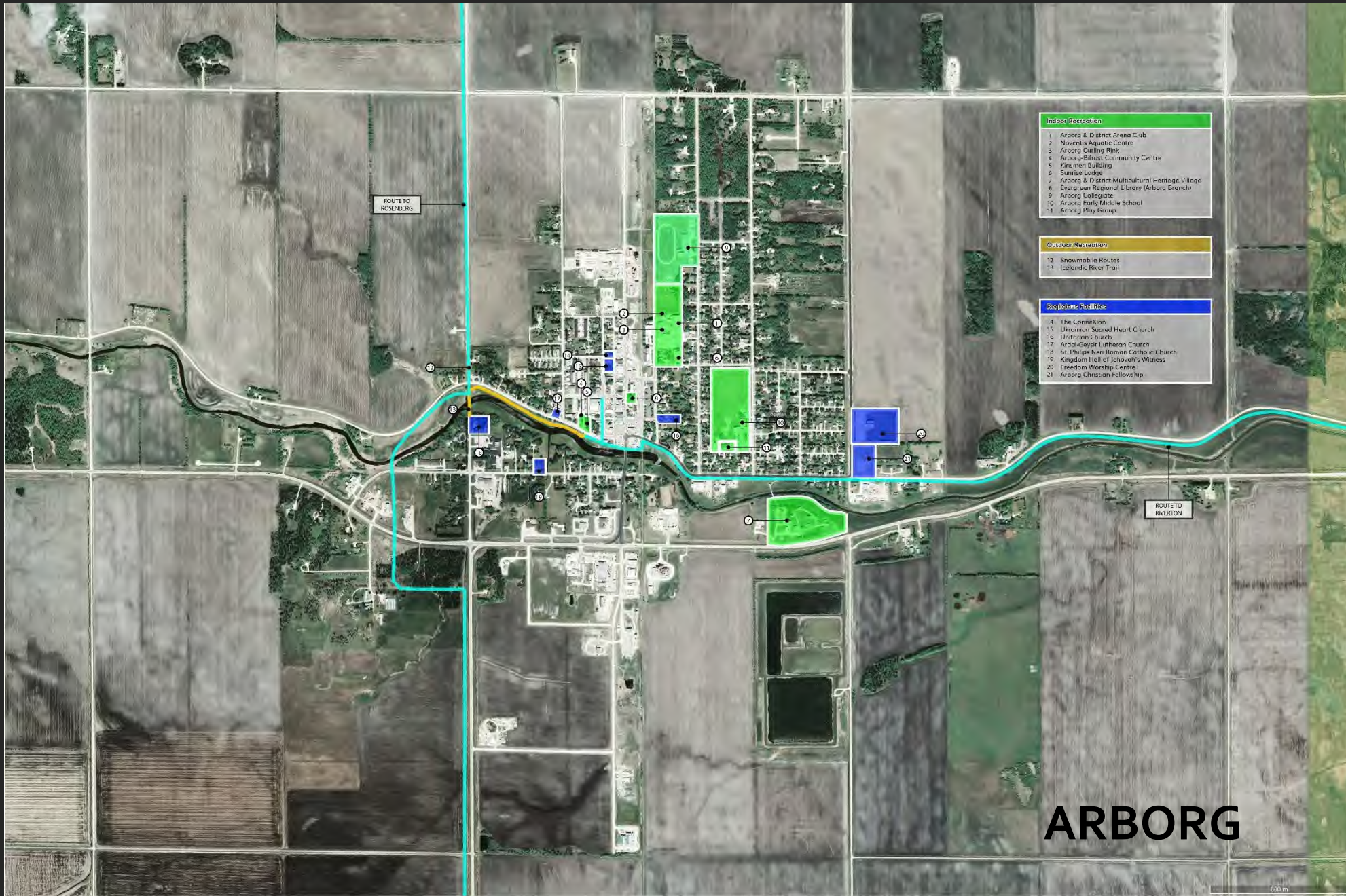
- Type (e.g. building, religious facility, open space)
- Location (mapped)
- Area and capacity
- Ownership (e.g. municipal, private, school)
- Operation and uses
- Age and general physical condition
- Upgrades and maintenance needs

The inventory, in both spreadsheet and map format, will help feed into the recreation plan recommendations.



Atkins | Client - Riverbank Regional and Tower Hill - FACILITY OPERATING

|                                                                          |                  |                                                                                                                                                                                                                                           |                                                                          |                                                                          |                                    |                               |  |                             |
|--------------------------------------------------------------------------|------------------|-------------------------------------------------------------------------------------------------------------------------------------------------------------------------------------------------------------------------------------------|--------------------------------------------------------------------------|--------------------------------------------------------------------------|------------------------------------|-------------------------------|--|-----------------------------|
| Atkins   Client - Riverbank Regional and Tower Hill - FACILITY OPERATING | Atkins           | PHI, installed and tested A/C units in<br>Lodge, located in the main building<br>First floor (main wing) PHI room (main)<br>1st floor (main wing) Main<br>4th floor (main wing) room (main wing)<br>Main wing<br>Basement<br>Admin/Server | Atkins   Client - Riverbank Regional and Tower Hill - FACILITY OPERATING | Atkins   Client - Riverbank Regional and Tower Hill - FACILITY OPERATING | 004                                | System<br>(December to April) |  |                             |
| Frederic (Housing) Units                                                 | Atkins           | 1 unit<br>8 lighting points<br>Max LED light<br>No incandescent (not feasible during winter)<br>Max condenser (insulated) (unit in)<br>Ripple air                                                                                         | Various types of electrical equipment<br>Tower Stairing                  | Person<br>33 March                                                       | (PHI (Basement)<br>PHI (Basement)) | Winter                        |  |                             |
| Malisa Beach Provincial Campground                                       | Design/Construct | 5 Basic Sites<br>33 Electrical Sites                                                                                                                                                                                                      | All ages and abilities                                                   | Person<br>Electrical                                                     |                                    | May to September              |  |                             |
| Unilever Camp                                                            | Design/Construct | Lodge (in) (equipment)<br>Camping<br>Large Deck<br>Camping<br>Lodge (in) (equipment)                                                                                                                                                      |                                                                          | Person                                                                   |                                    |                               |  | Managed by Home<br>Division |
| Frederic Band Islands                                                    | Design/Construct | 3 swimming pools (existing between Riverbank and<br>Beach)                                                                                                                                                                                | All ages and abilities                                                   | Person                                                                   |                                    | Summer                        |  |                             |
| PHI - Tower Hill Campground                                              | Design/Construct | 11th (existing)<br>15 sites - 1 for large numbers                                                                                                                                                                                         | All ages and abilities                                                   | Person<br>Electrical                                                     |                                    | Summer                        |  |                             |
| Atkins   Client - Riverbank Regional and Tower Hill - FACILITY OPERATING | Atkins           | PHI (existing) (equipment) (equipment)<br>Ribbon Tables and Fire Pits<br>Varying (Women's) (rest) Showers and a dormitory<br>In. No one (Riverbank)                                                                                       | All ages and abilities                                                   | Person                                                                   |                                    | Summer                        |  |                             |



**Indoor Recreation**

- 1 Arborg & District Arena Club
- 2 Novartis Aquatic Centre
- 3 Arborg Curling Rink
- 4 Arborg-Balfour Community Centre
- 5 Kinsmen Building
- 6 Sunrise Lodge
- 7 Arborg & District Multicultural Heritage Village
- 8 Evergreen Regional Library (Arborg Branch)
- 9 Arborg Collegiate
- 10 Arborg Early Middle School
- 11 Arborg Play Group

**Outdoor Recreation**

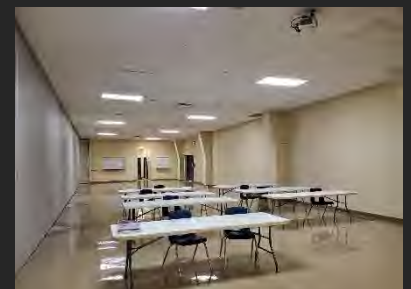
- 12 Snowmobile Routes
- 13 Icelandic River Trail

**Religious Facilities**

- 14 The Connection
- 15 Ukrainian Sacred Heart Church
- 16 Unitarian Church
- 17 Ardal-Geyser Lutheran Church
- 18 St. Philip's Non-Roman Catholic Church
- 19 Kingdom Hall of Jehovah's Witnesses
- 20 Freedom Worship Centre
- 21 Arborg Christian Fellowship

**ARBORG**

800 m





# Recreation Facility Condition Assessment

- The purpose of the Facility Condition Assessment is for the Town of Arborg and Municipality of Bifrost-Riverton to understand the facilities' condition and to effectively prioritize maintenance and upgrade needs.
- Dillon engineering team (consisting of a structural engineer, mechanical engineer, and electrical engineer) will evaluate each facility's condition.
- The review will include both a field assessment by the engineers, as well as interviews with facility administration and maintenance personnel.
- The condition information collected during the site visit will be used to identify repair, replacement or upgrade needed and associated costs for immediate repairs and long term upgrades (10-year time frame).
- Class D cost estimates will be developed as well.



# Program Inventory

The inventory of recreation programs and activities includes details on:

- Category and Type (e.g. Sports, cultural, event, social, arts)
- Community and Venue
- User Groups
- Season
- Program Details

The program and activity inventory will help feed into the recreation plan recommendations as well.

|                     |                   |
|---------------------|-------------------|
| All Season Programs | Dance Classes     |
|                     | Zumba Classes     |
|                     | Ukrainian Dancing |

|                 |                |
|-----------------|----------------|
| Winter Programs | Rec Hockey     |
|                 | Minor Hockey   |
|                 | Jr B Hockey    |
|                 | Figure Skating |

|                 |                  |
|-----------------|------------------|
| Summer Programs | Swim Program     |
|                 | Summer Day Camp  |
|                 | Pickleball       |
|                 | Minor Baseball   |
|                 | Minor Soccer     |
|                 | Slo-pitch League |
|                 | Rod & Gun Club   |

**Arborg Bifrost-Riverton Recreation Master Plan - Program Inventory**

| Program Name                                  | Program Type   | Activity Category | Age Group                  | Program Details      | Facility                | Location                        | Season      |
|-----------------------------------------------|----------------|-------------------|----------------------------|----------------------|-------------------------|---------------------------------|-------------|
| Arborg                                        | Arborg         | Arborg            |                            |                      |                         |                                 |             |
| Arborg                                        | Arborg         | Arborg            |                            |                      | Rowette Aquatic Centre  | Arborg                          | Summer      |
| Arborg - Touchdown Tennis / Deserve           | Tennis         | Arborg            |                            |                      |                         | Rowette (Arborg)                | Year-Round  |
| Arborg - Touchdown Football                   | Football       | Arborg            | U7, U9, U11, U13, U15, U18 |                      |                         | Arborg/Riverton                 | Summer      |
| Arborg - Touchdown Soccer                     | Soccer         | Arborg            |                            |                      | Centennial Park         | Arborg                          | Summer      |
| Arborg - Touchdown Hockey                     | Hockey         | Arborg            |                            |                      |                         | Arborg                          | Winter      |
| Arborg - Touchdown Basketball                 | Basketball     | Arborg            |                            |                      |                         |                                 |             |
| Arborg - Touchdown Volleyball                 | Volleyball     | Arborg            |                            |                      |                         |                                 |             |
| Arborg - Touchdown Badminton                  | Badminton      | Arborg            |                            |                      |                         |                                 |             |
| Arborg - Touchdown Table Tennis               | Table Tennis   | Arborg            |                            |                      |                         |                                 |             |
| Arborg - Touchdown Chess                      | Chess          | Arborg            |                            |                      |                         |                                 |             |
| Arborg - Touchdown Golf                       | Golf           | Arborg            |                            |                      |                         | Riverton                        | Winter      |
| Arborg - Touchdown Curling                    | Curling        | Arborg            |                            |                      |                         | Arborg                          | Winter      |
| Arborg - Touchdown Figure Skating             | Figure Skating | Arborg            |                            |                      | Arborg & Riverton Arena | Arborg/Riverton                 |             |
| Arborg - Touchdown Ice Hockey                 | Ice Hockey     | Arborg            |                            | Grades 10 to 12      | Arborg & Riverton Arena | Arborg                          | Winter      |
| Arborg - Touchdown Soccer Development         | Soccer         | Arborg            |                            | Grades 7 to 9        | Arborg & Riverton Arena | Arborg/Riverton                 | Winter      |
| Arborg - Touchdown Hockey Development         | Hockey         | Arborg            |                            | Grades 10 to 12      | Arborg & Riverton Arena | Arborg                          | Winter      |
| Arborg - Touchdown Curling Development        | Curling        | Arborg            |                            |                      | Arborg & Riverton Arena | Arborg/Riverton                 | Winter      |
| Arborg - Touchdown Figure Skating Development | Figure Skating | Arborg            |                            |                      | Arborg & Riverton Arena | Arborg/Riverton                 | Winter      |
| Arborg - Touchdown Ice Hockey Development     | Ice Hockey     | Arborg            |                            |                      | Arborg & Riverton Arena | Arborg                          | Winter      |
| Arborg - Touchdown Dance                      | Dance          | Arborg            |                            | All Ages             | Arborg                  | Arborg                          | Year-Round  |
| Arborg - Touchdown Ballet                     | Ballet         | Arborg            |                            | Juniors/Teens/Ballet |                         | Arborg/Arborg                   | Year-Round  |
| Arborg - Touchdown Aerobics                   | Aerobics       | Arborg            |                            |                      |                         | Arborg                          | Fall        |
| Arborg - Touchdown Yoga                       | Yoga           | Arborg            |                            |                      |                         | Other                           | Summer      |
| Arborg - Touchdown Tai Chi                    | Tai Chi        | Arborg            |                            |                      |                         | Refr. Grounds, Arborg           | Summer      |
| Arborg - Touchdown Badminton                  | Badminton      | Arborg            |                            |                      |                         | Arborg/Refr. Grounds            | Summer      |
| Arborg - Touchdown Fitness Club               | Fitness Club   | Arborg            |                            |                      |                         | Arborg                          | Year-Round  |
| Arborg - Touchdown Open Gym                   | Open Gym       | Arborg            |                            |                      |                         | Arborg                          | Year-Round  |
| Arborg - Touchdown Gymnastics                 | Gymnastics     | Arborg            |                            |                      |                         | Arborg East (Little League) Gym | Fall/Winter |
| Arborg - Touchdown Hockey Development Club    | Hockey         | Arborg            |                            | Years 10 to 12       |                         | Arborg & Riverton Arena         | Winter      |

# Trends in Rural Recreation



# Programming Trends

Over the past decade or so, a few key themes have emerged with regards to rural recreation as it relates to programming. These include:

- Declining volunteerism, volunteer burnout, and challenges with volunteer retention / recruitment
- Increasing interest in individual / self-directed activities; declining interest in organized activities and team sports
- Increasing participation by the senior demographic
- A desire for “drop-in” activities with less commitment

# Facility Trends

Over the past decade or so, a few key themes have emerged with regards to rural recreation as it relates to facilities. These include:

- Facilities built in 1960s/1970s are approaching the end of their lifecycles
- A lack of funding not only for capital costs, but for ongoing maintenance / operations
- The need for flexibility in terms space to accommodate changing preferences and evolving functions (e.g. libraries as a training centres / technology hubs / meeting spaces)
- The need for efficiencies (energy efficiency, staff efficiencies, space allocation, etc.)
- Challenges with stricter regulations in terms of liability, permits, supervision, insurance, etc.
- A phased approach to development / expansion of facilities

# Other Trends

Other key trends in rural recreation to emerge include:

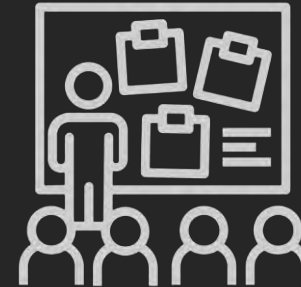
- The importance of partnerships in the provision of recreation (government, non-profit, corporate, volunteers, schools, communities, etc.)
- Recreation as a tourism and economic development tool
- The importance of technology (communications, registration, smartphones, etc.)
- A focus on health and wellness
- Creative funding and financing models (tax revenue, user fees, fundraising, sponsorship, grants, cost-sharing, etc.)

# Stakeholder Engagement and Public Consultation



# Community Engagement

- Genuine public engagement and community consultation is key to a successful recreation planning process.
- Over the course of the project, our team will engage with the community in various ways, including:
  - Meetings with the local recreation commissions and Councils
  - Targeted stakeholder meetings (like today's)
  - Community Workshops (November 2<sup>nd</sup> and 3<sup>rd</sup>)
  - An online community-wide survey



# Stakeholder Engagement (Today)

We'll be hosting a series of meetings in Riverton (Today and November 2<sup>nd</sup>) and Arborg (October 15<sup>th</sup> and November 3<sup>rd</sup>) with various individuals, organizations, and groups involved in recreation in the region, including:

- The local Recreation Commissions;
- Recreation groups, sports associations, and arts/cultural organizations;
- Representatives from local community centres, churches, and recreation facilities;
- Local school and school division officials; and,
- Several others.

# Community Workshops

The purpose of the workshops will be to:

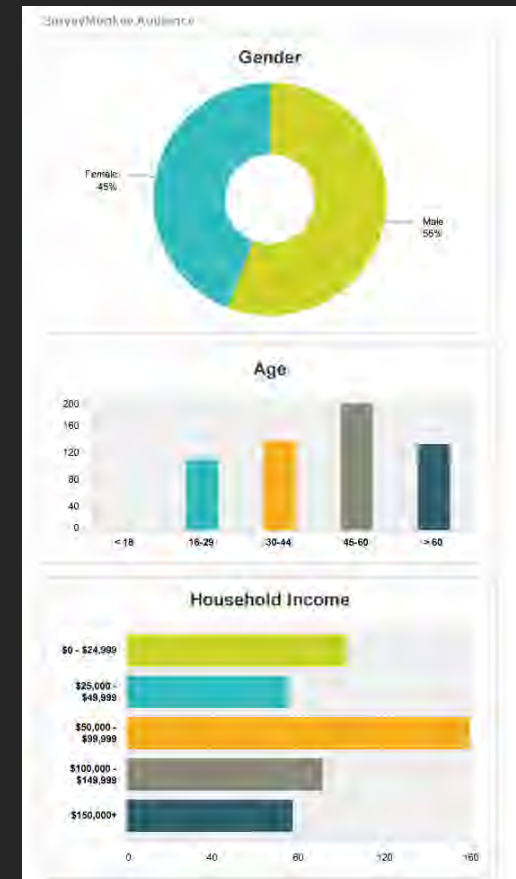
- Introduce the project and validate preliminary findings;
- Understand specific user group and demographics' needs;
- Gauge satisfaction with existing facility conditions and suggestions for changes;
- Establish recreation priorities;
- Develop the long-term vision/philosophy for recreation in Arborg and Bifrost-Riverton; and,
- Receive feedback and input into the Recreation Plan process.



# Community Wide Survey

An online Community Wide Survey will be advertised in the local paper and through a mass mailing, and launched in November. It will serve to:

- Determine attitudes, preferences, priorities, and expectations
- Understand how residents spend leisure/recreation time now, and how would they like to in the future
- Gauge levels of satisfaction with facilities/programs
- Ascertain willingness to pay
- Identify barriers to participation
- Confirm priorities
- Break down data by demographics/geography



# Other Recreation Master Plan Considerations



# Delivery System and Volunteer Retention

## Review Program Delivery

- Programming
- Structure of Rec Commissions
- Governance and Management
- Funding for facilities/programs
- Recommendations to:
  - Find efficiencies
  - Avoid duplication
  - Provide guidance
  - Overcome barriers



## Volunteer Recruitment and Retention

- Avoid volunteer burnout
- Encourage volunteerism
- Build capacity and transfer skills
- Volunteer support
- Appreciation and Recognition

# Recommendations, Implementation and Funding

Based on the cumulative analyses from the previous tasks, the Project Team will develop a series of draft recommendations. The recommendations will cover:

- Facility, open space, and trail network priorities;
- Service delivery and efficiencies;
- Potential partnerships and funding options to pursue;
- A series of recreational priorities, in order to address gaps in service;
- Policy options, levies, and park dedication; and
- Phased approaches to implementation (short, intermediate, and long-term).

# Recreation Master Plan

# Recreation Master Plan Outline (1/2)

- Vision Statement and Philosophy
- Goals and Objectives
- Background Study Findings
- Stakeholder Engagement Summary
- Facility Inventory and Condition Assessment
- Program Inventory and Needs Assessment
- Financial Considerations
  - Financing and Funding
  - Expenses and Revenues
  - Capital and Operating Costs
  - Feasibility

# Recreation Master Plan Outline (2/2)

- Recommendations
  - Departmental Structure
  - Program Delivery
  - Volunteer Retention
  - Policy Considerations
  - Open Space, Park, Trails, and Facilities
- Implementation
  - Implementation Tools
  - Phasing (short, medium, long-term)
- Conclusion



# Next Steps

# Next Steps

## The next steps in the planning process will include:

- Finalizing the background study
- Hosting the remaining stakeholder meetings
- Hosting the community workshops
- Launching the community survey
- Completing the facility condition assessments
- Undertaking the recreation needs assessment and developing recommendations
- Presenting the draft Recreation Master Plan to both Councils
- Finalizing the final Recreation Master Plan

# Discussion

# Discussion

- As community stakeholders involved in the provision of recreation in Arborg and Bifrost-Riverton, your perspectives are critical to our study.
- For this part of the meeting, we would like to engage in an informal discussion regarding a wide variety of recreation topics, including programming, facilities, volunteerism, recreation delivery, willingness to pay, and several others.
- These topics will be covered broadly in the following categories:
  - Opportunities
  - Challenges and Barriers
  - Priorities
  - Implementation
  - Other

# Opportunities

- What opportunities do you see for recreation in Arborg and Bifrost-Riverton?
- Do you see opportunities for additional recreation programs, activities, or events? Are there gaps that need to be filled?
- Do you see opportunities for enhanced or new facilities?
- What is your vision for recreation over the next 10 years?

# Barriers, Constraints, Challenges

- What do you see as major barriers to recreation in the community? (Cost? Distance? Interest? Availability? Lack of Volunteers? Lack of Time?)
- What can be done to address these barriers?

# Priorities

- What do you see as recreation priorities?
  - Facility priorities?
  - Programming priorities?
  - Other priorities?
- Which priorities do you see as short-term? Medium-term? Long-term?

# Implementation

- How do you see the opportunities and priorities being implemented?
- What are your thoughts on funding, financing, and community willingness to pay?
- Are there any changes to the recreation delivery model that might help with implementation?

# Open Discussion

- Is there anything we've missed?
- Is there anything else you would like to discuss regarding recreation in the community?

# Thank You!

If you have any further questions,  
please contact:

Brendan Salakoh, RPP, MCIP

*Landmark Planning & Design*

Email: [info@landmarkplanning.ca](mailto:info@landmarkplanning.ca)

Telephone: 204-453-8008

Thank you!

